

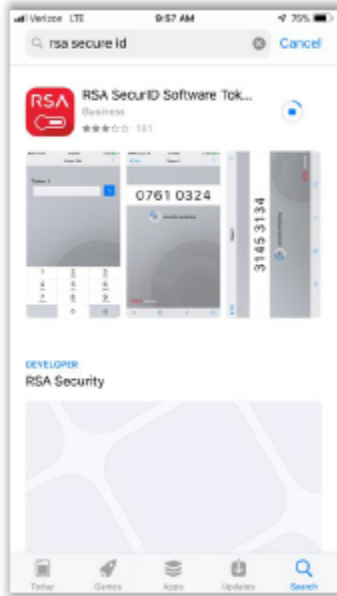


Installing RSA Token Software to Mobile Device

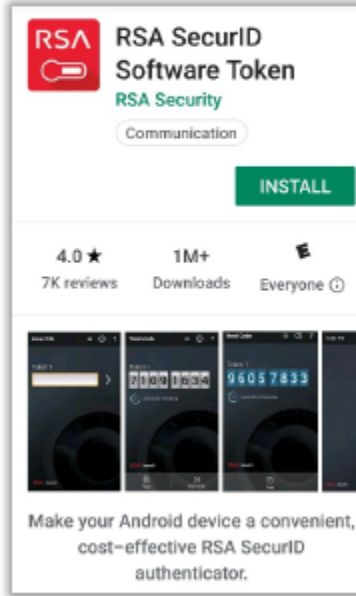
Forward the email containing the SDTID file to an email accessible from your mobile device.

- The user will need to download and install the RSA SecurID Software Token application from the Apple App Store or the Google Play Store.

iPhone:



Android:





Installing RSA Token Software to Mobile Device

- Open the RSA SecurID Software Token application after the installation is complete. The license agreement will appear. On iPhone, tap Accept. On Android, place a check mark in the box and tap Continue.

iPhone:



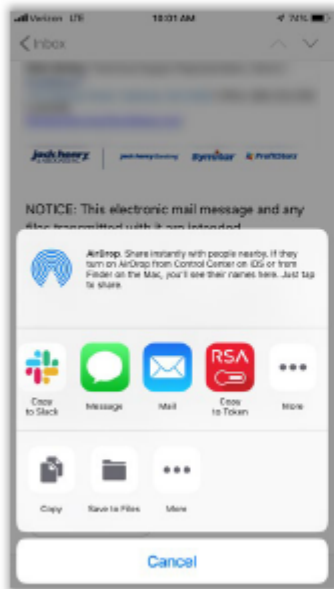
Android – do not use Import Token or Device ID. Move to next step:





Installing RSA Token Software to Mobile Device

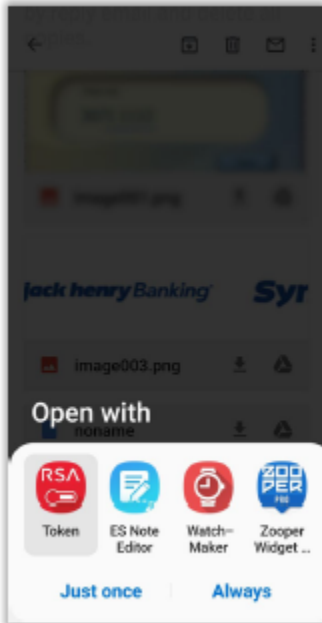
- Open your email on the device containing the *.stid file and note the password. If the password was in a separate email, open that email first to get the password before installing. Tap on the attachment in the email to install it.
- On iPhone, a menu will appear asking which application needs to be used to open it. Tap on the RSA app icon.





Installing RSA Token Software to Mobile Device

- On Android, a menu will appear asking which application needs to be used to open it. The user can double-tap the RSA app icon or tap the RSA app icon and tap **Just Once** or **Always**.

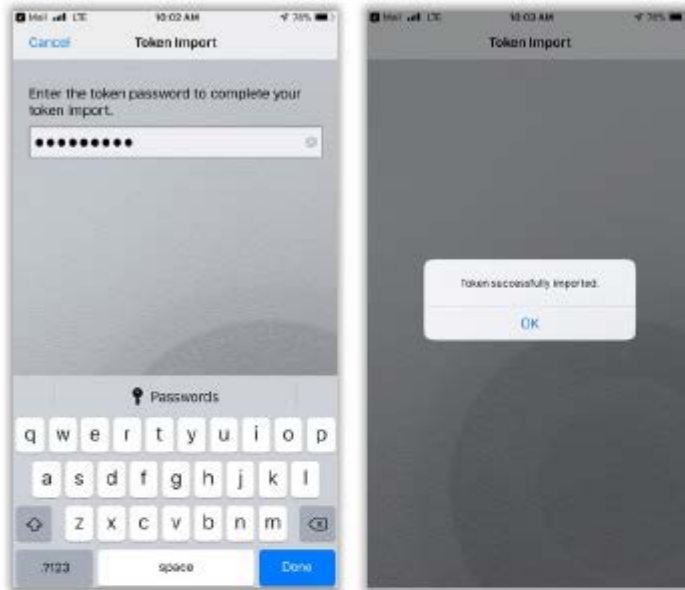




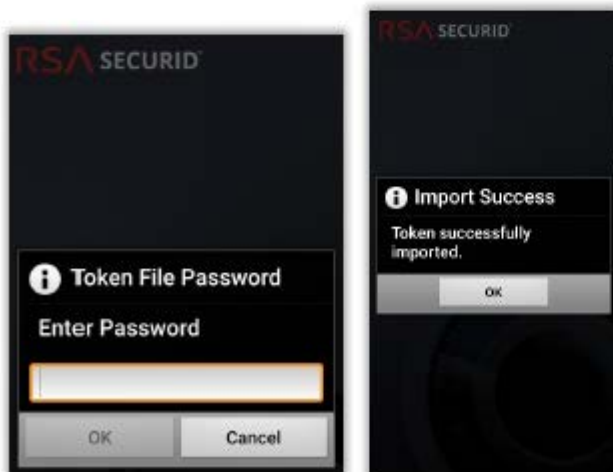
Installing RSA Token Software to Mobile Device

- After the installation is complete, the user will be asked for the token password, which will be the **Installation Password** created during the download.

iPhone:



Android:





Installing RSA Token Software to Mobile Device



- The next screen will be the Tokencode they will use when logging in. The number will change every 60 seconds.
- For security reasons, Android devices do not allow screenshots of the Tokencode screen. iPhone devices will allow screenshots but provides an alert that a screenshot has been taken.
- For FI users, the user can begin using tokens right away if the **FI User Multifactor Authentication Method** is set to *Direct Tokens* in the **FI Configuration**.
- For Customer/Member Users, the user can begin using the tokens right away if the **Multifactor Authentication Method** is set to *Direct Tokens* in the **Customer Definition**

NOTE: A software token cannot be assigned to multiple users since they are unique to each specific user, but the "license file" may be imported into more than one PC or phone, if the devices are similar. A user who "travels" to different PC workstations during the day, for example, may wish to install their software token on each PC.
